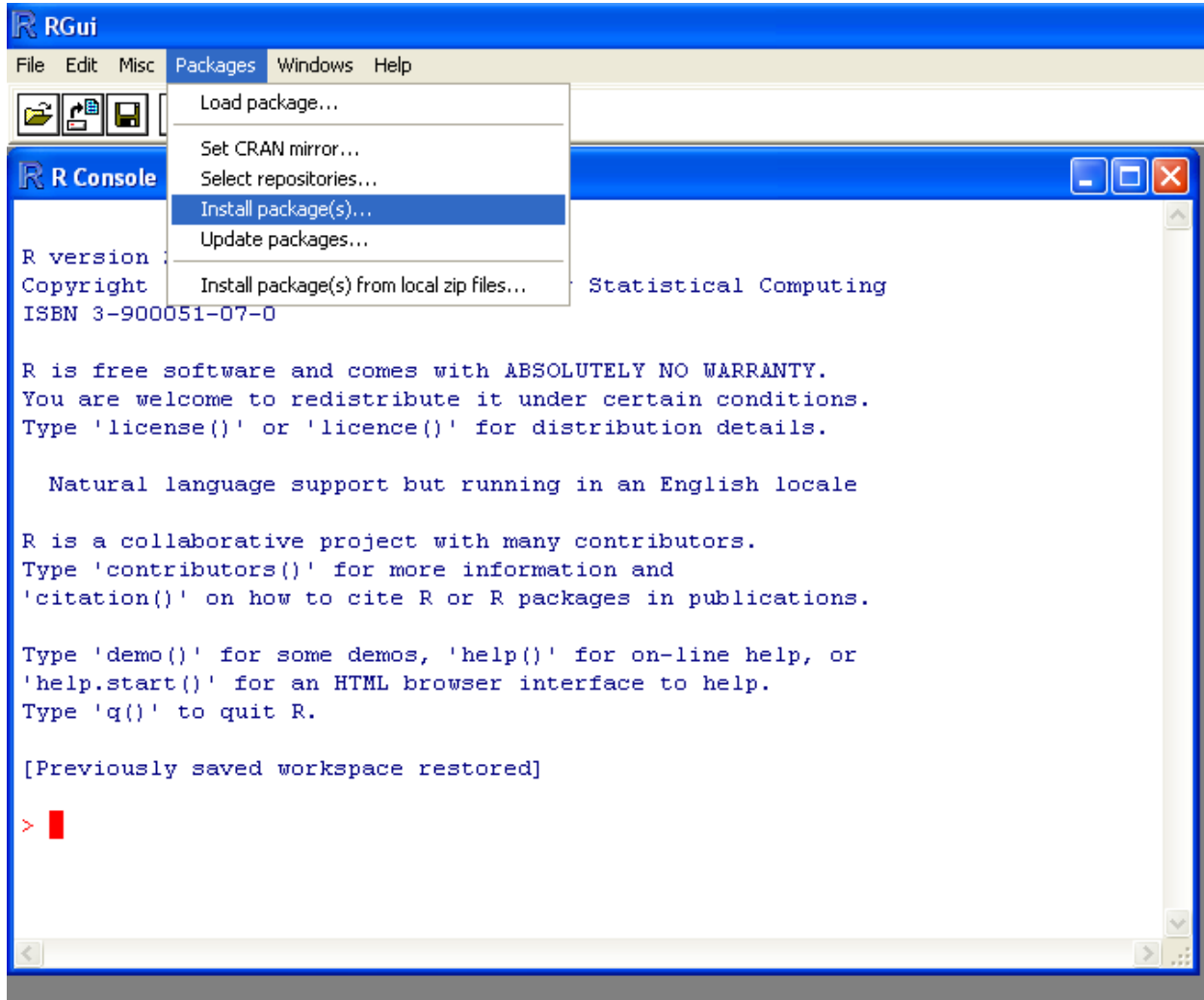


Installing Libraries/Packages in R

First start R 2.4.1:

Then click on “Packages” → “Install package(s)”

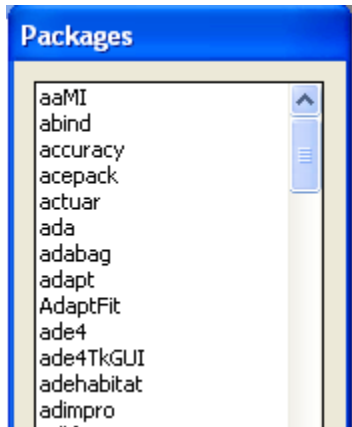
For Macs, click on “Packages & Data” → “Package Installer”



Then select a CRAN mirror, any will do.

Macs don't have to do this step. You do, however, need to click on “Get List.”

You will then see a list of all of the available packages like this: *(a little different for Macs)*



You need to select the following packages:

- 1) lattice
- 2) MBESS

You can load them all at once by holding down the CTRL key (*Apple key for Macs*), and then hitting "OK."

You should then be ready to go.