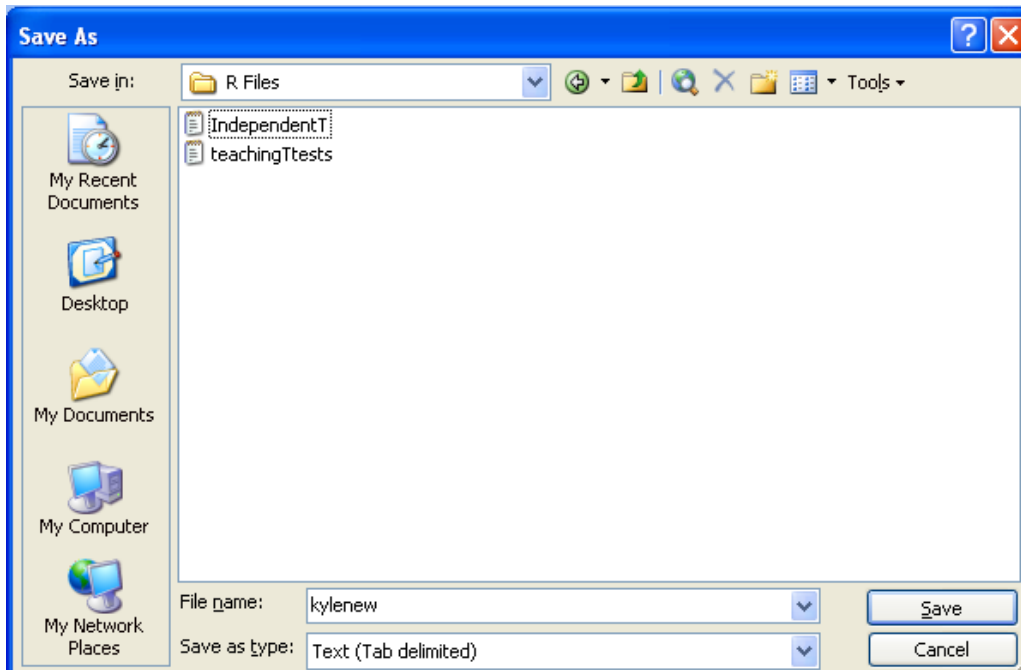


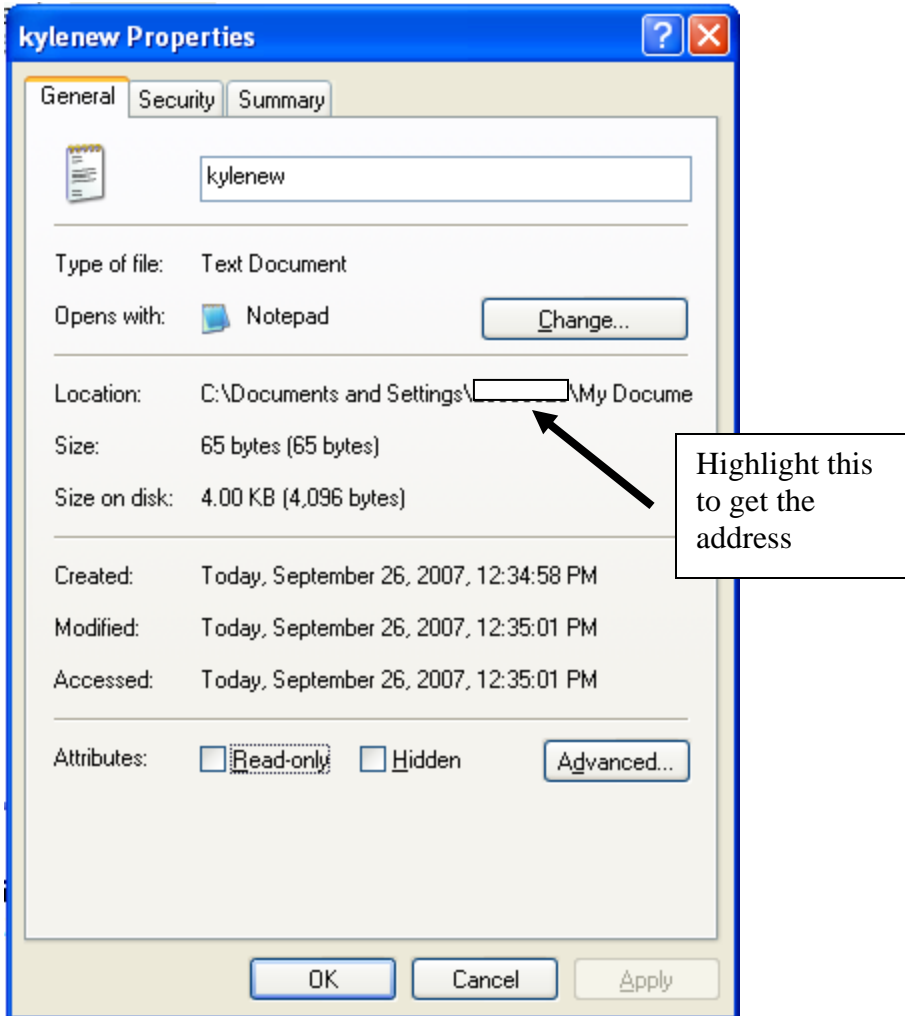
Ways to get data into R

1. Run: `library(Rcmdr)` and then open the dataset from there.
2. Use: `read.table` to read in a tab-delimited file
 - a. e.g. `new.data<-read.table(file = "C:/Documents and Settings/My Documents/Kyle's Folder/dataset.txt", header=T)`
 - b. Note that in the above, the "/" is always facing forward
3. If you have the "foreign" library, you can also use the commands
 - a. `read.spss` for SPSS files
 - b. `read.dta` for STATA files
 - c. `read.ssd` and `read.xport` for SAS files

For example, suppose that I want the following file from Excel. First, I would save the file as a tab-delimited file like so:



Next, find the address of the file. An easy way to do this is to right click on the file and select "Properties." This gives you the following screen where you can see the address:



Remember, however, that the slash marks are in the wrong direction, so you will need to change them.

Then in R, run something like:

```
> new.data<-read.table(file = "C:/Documents and Settings/My Documents/Kyle's  
Folder/kylenew.txt", header=T)
```

You can also import data into R if you have a live internet connection. For example:

```
new.data<-read.table(file= "http://www.hlm-online.com/training/example.data.txt",  
header=T)
```